

Server Management Software

User's Manual

The screenshot displays the SMS (Server Management Software) interface. At the top, there are tabs for Status, eMap, Config, and Backup. The main area shows a map with several camera locations marked by red dots and labeled with IDs like 155.C03, 155.C10, 155.C11, 205.C02, 155.C07, and 205.C16. Each location has a small video preview window showing the camera's view. The interface also includes a sidebar with a tree view for Client Setup, Base Group, and a list of cameras (155, 211, 179, 155-1, 201, 155-2). The top right corner shows the time 10:55:23. At the bottom, there is a table of sensor events.

DVR Name	Event	Time	Save	Load	Sound
211	Sensor Event - Channel 08 - Camera .	2007-06-05 10:44:00			
211	Sensor Event - Channel 07 - Camera .	2007-06-05 10:44:00			
211	Sensor Event - Channel 06 - Camera .	2007-06-05 10:44:00			
211	Sensor Event - Channel 05 - Camera .	2007-06-05 10:44:00			
211	Sensor Event - Channel 04 - Camera .	2007-06-05 10:44:00			

Contents

1 - Introduction	2
1.1 About this manual	2
1.2 Configuration	2
1.3 SMS Functions	2
1.4 Product Information	2
1.5 System Requirements	2
2 – SMS Installation	3
2.1 How to install	3
3 - SMS	5
3.1 General	5
3.2 SMS Configuration	5
3.3 SMS Functions	6
3.3.1 Remote Site List	6
3.3.2 Event List	11
3.3.3 Status	11
3.3.4 e-Map	12
3.3.5 Config	14
3.3.6 Backup	17
4 – Live Viewer	21
4.1 General	21
4.2 Live Viewer Configuration	21
4.3 Live Viewer Functions	22
4.3.1 Remote Site List	22
4.3.2 Video Monitoring Area	24
4.3.3 Utility	26
4.3.4 Search	28
5 – Search Viewer	30
5.1 General	30
5.2 Search Viewer Configuration	30
5.3 Search Viewer Functions	31
5.3.1 Local Search	31
5.3.2 Remote Search	31
5.3.3 AVI File Conversion	32
6 – DVR Player	33
6.1 General	33
6.2 DVR Player Functions	33
7 – Web Viewer	34
7.1 Web viewer Configuration	34
7.2 Web Viewer Functions	34



1. Introduction

1.1 About this manual

This manual describes the functions and provides a step by step guide in operating SMS (Server Management Software), a software used to remotely monitor and manage a DVR.

1.2 Configuration

The SMS package consists of the SMS, Live Viewer, and Search Viewer programs.

SMS: Main Management Program

Live Viewer: Remote Monitoring and Auxiliary Video Play Program

Search Viewer: Remote Search Program

1.3 SMS Functions

Checks and reports the status of a DVR system from a remote site

Reports the detection of an event from a remote site

Remotely monitors a real-time video

Searches and plays recorded images by time and event

Features E-MAP function

Provides a variety of backup tools from a remote site

Allows recording and remote setting of a camera

Upgrades a DVR firmware from a remote site

1.4 Product Information

SMS Software User Guide

SMS Installation CD-ROM (1 diskette)

1.5 System Requirements

OS: Microsoft Windows XP or higher

CPU: Intel Processor Dual core 1.3GHz or higher

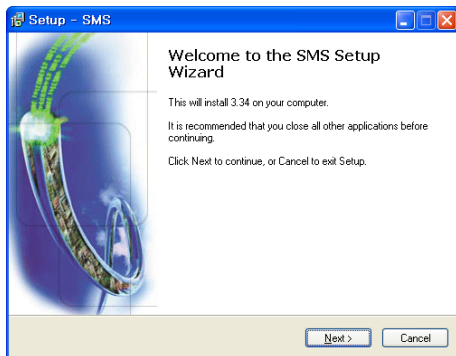
Memory: 2GByte or higher

Graphic: 256MB or higher

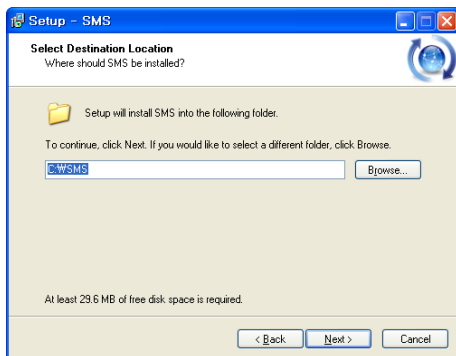
2. SMS Installation

2.1 How to install

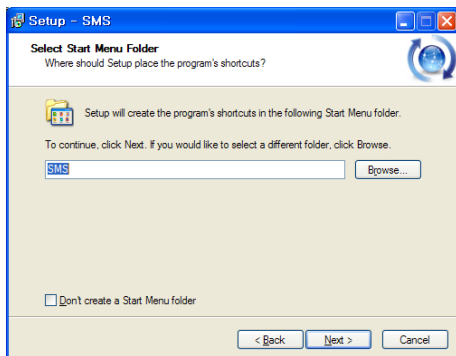
- ① Set the Installation CD on the CD-ROM drive.
- ② Browse the content of the CD and click on the “Setup.exe” file.
- ③ On the SMS Setup Wizard dialogue box that is displayed, click on the “Next” button.



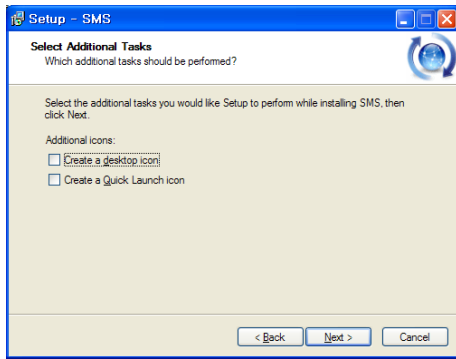
- ④ Set the installation path, and click “Next”.



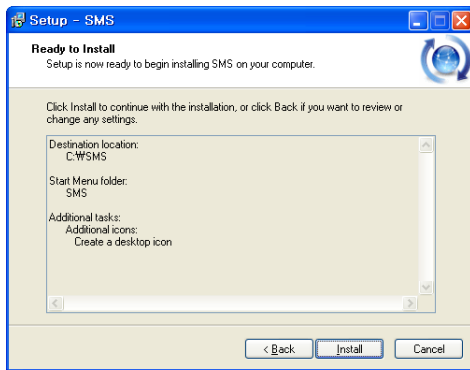
- ⑤ Set the name of the Start Menu folder, and click “Next”.



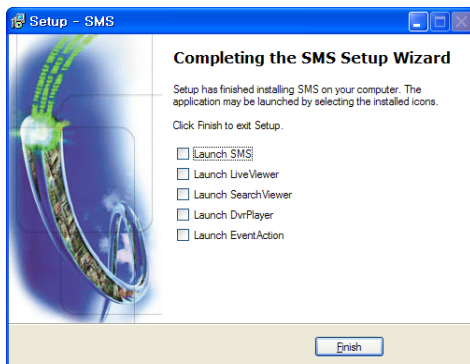
- ⑥ Select the additional tasks to be performed by marking the appropriate options, and click “Next”.



- ⑦ Check the installation settings, and click “Install” to proceed with the installation.



- ⑧ When the window below is displayed, click on the “Finish” button to complete the installation.



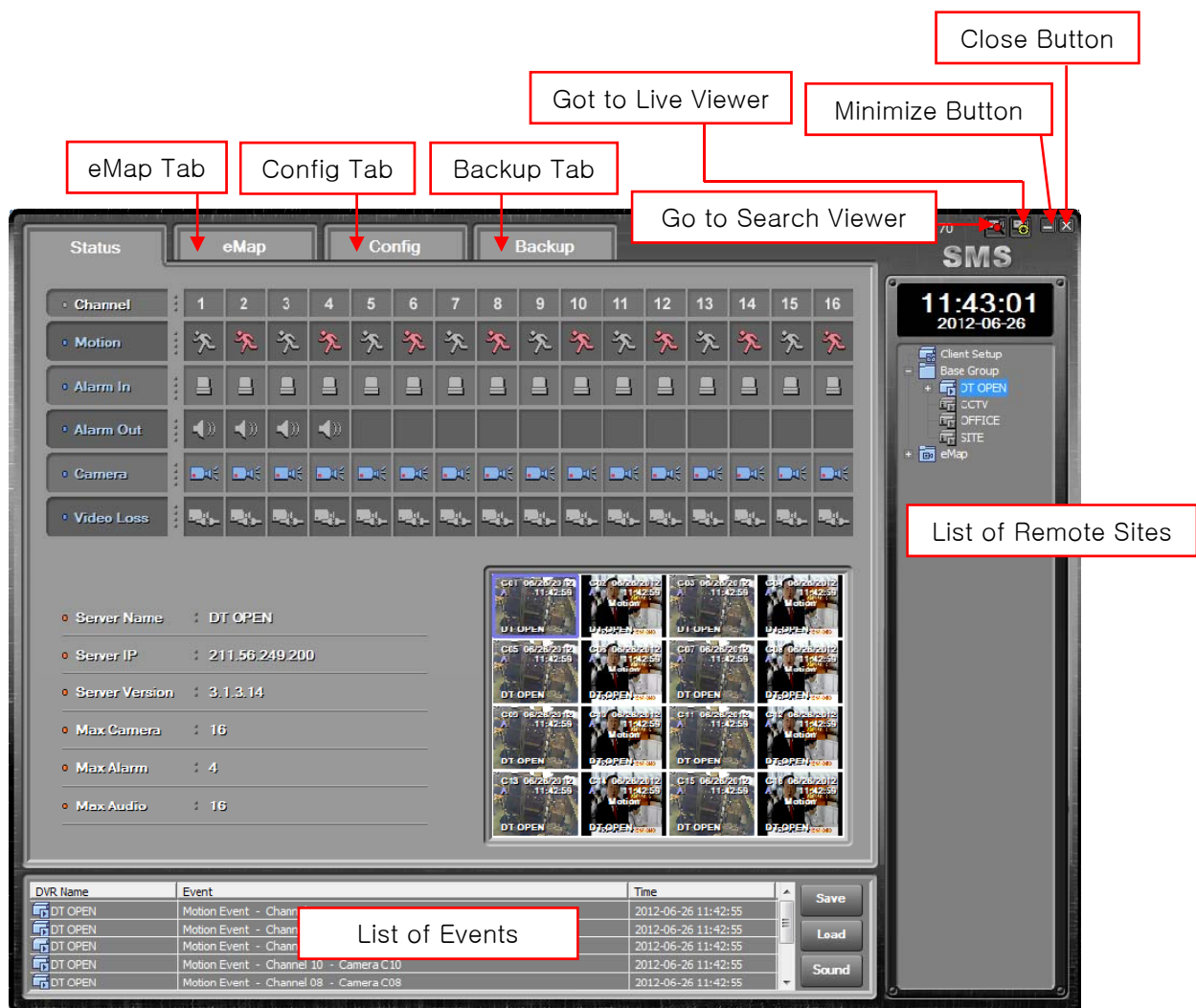
3. SMS

3.1 General

SMS is an integral software that can control the DVR system status management, real-time video monitoring, e-Map, DVR system setting, and DVR backup from a remote site.

3.2 SMS Configuration

The SMS window features the List of Remote Sites and List of Events sections found at the right side and bottom of the window. It has the following tabs, Status, e-Map, Config, and Backup, as shown below:



3.3 SMS Functions

3.3.1 Remote Site List

SMS software can register multiple DVRs as a list and connect them to use.

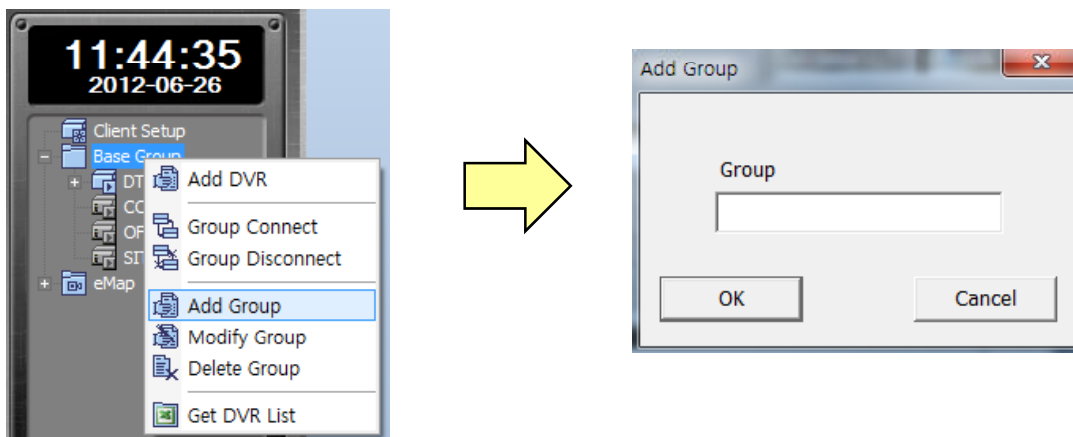
A. DVR Group

The List of Remote Sites manages DVR items as a group;
the Base Group is created during initial installation.

① ADD Group

: Click the right mouse button on the [Base Group] and select [Add Group].

Input any group name and click the [OK] button to add.



② Modify Group

: Click the right mouse button on the created group and select [Modify Group].

Change the group name and click the [OK] button.

③ Delete Group

: Click the right mouse button on the created group and select [Delete Group].

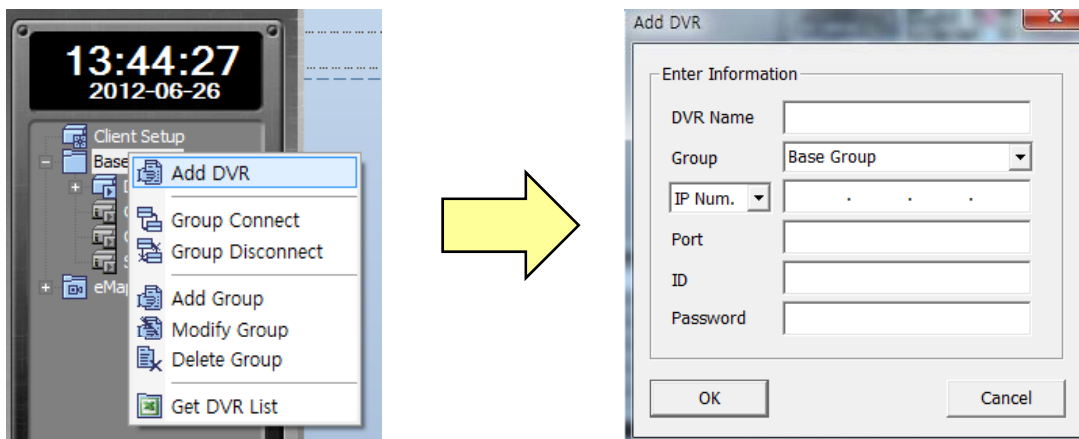
NOTE

: If any DVR, which is included in the created group is connected, the group cannot be deleted.

B. DVR List

① Add DVR List

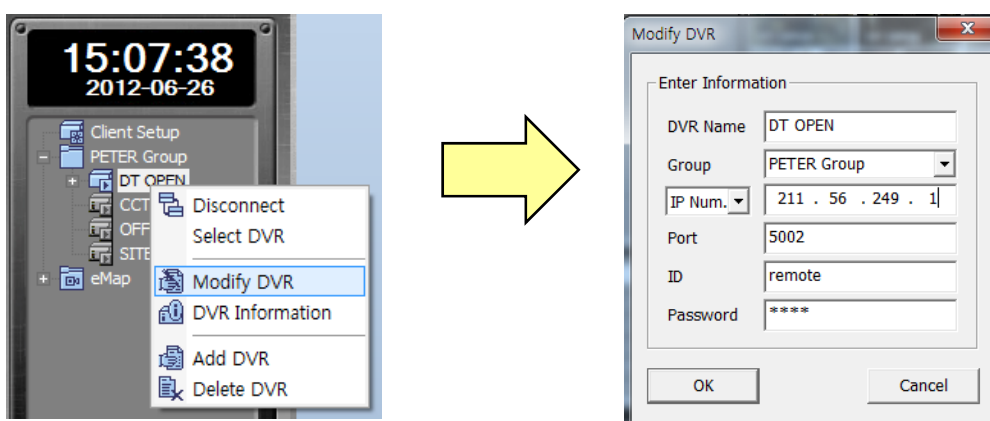
Click the right mouse on the [Base Group] and select the [Add DVR]
Input the DVR information for connection.



NOTE : Default Port : 7000 , ID : admin , Password : 000000

② Modify DVR

Click the right mouse on the created DVR list and select the [Modify DVR]



③ Delete DVR

Click the right mouse on the created DVR list and select the [Modify DVR]

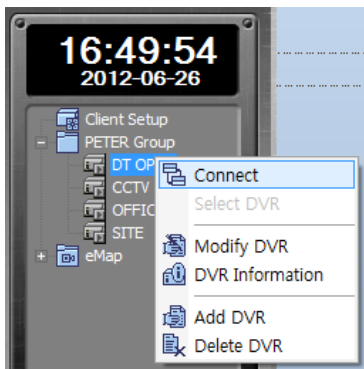
④ Move DVR List

: To move the added DVR list into a different group, simply drag and drop the list into the desired group.

NOTE : Drag-and-drop is the action of clicking on an item using the left mouse button and dragging it to a different location.

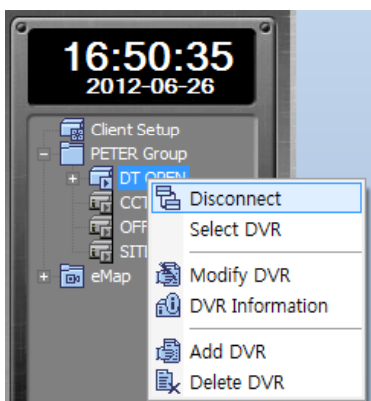
⑤ Connect DVR

: Click the right mouse on the DVR list and select [Connect] or double- click on the DVR list.



⑥ Disconnect DVR

: Click the right mouse on the connected DVR and select [Disconnect] button.

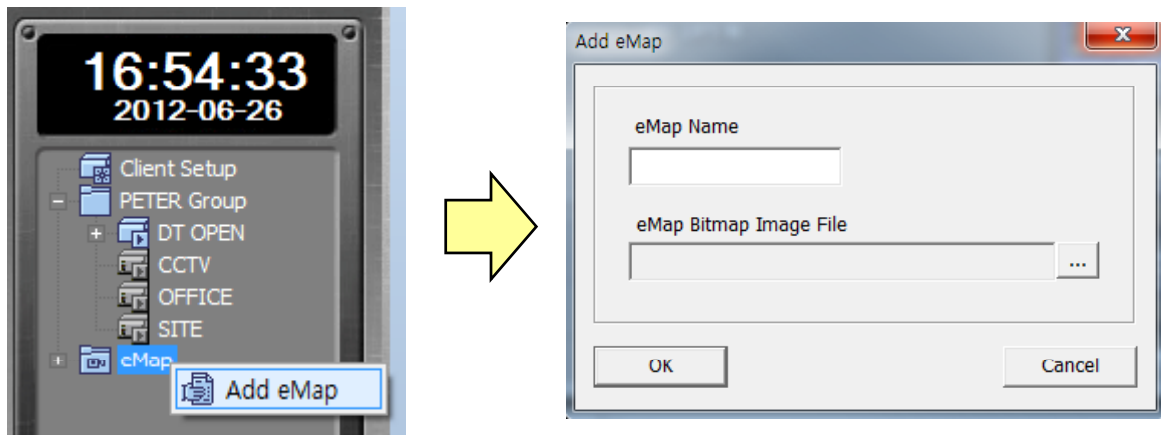


C. E-MAP

① Add eMap

: Click the right mouse on the [eMAP] menu and select [Add eMap].

Input the eMap name and select the e-map that saved on PC.

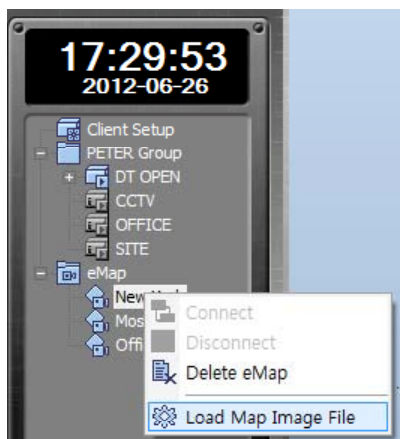


NOTE : SMS only supports a bitmap image.

② Change eMap Image

: Click the right mouse on the registered eMap and select [Load Map Image File]

then select the image file to be changed.

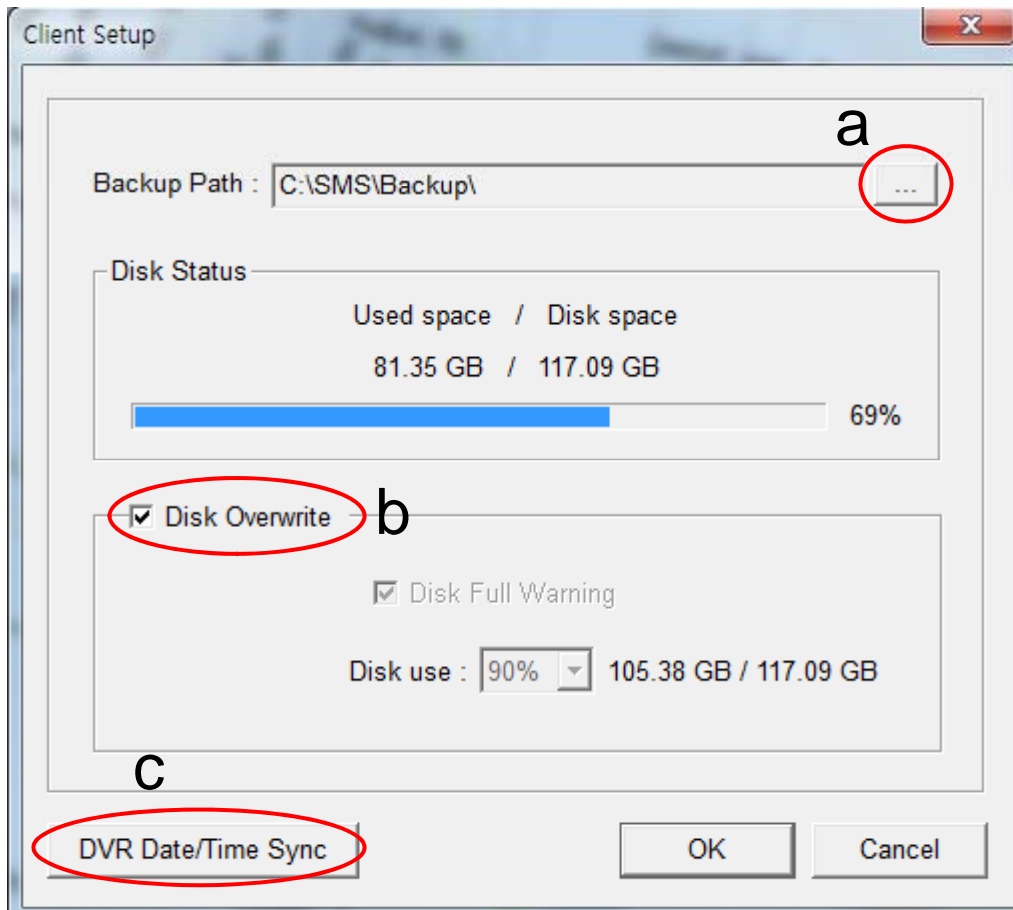


③ Delete eMap

: Click the right mouse on the eMap and select [Delete eMap].

D. Client Setup

Double click the [Client Setup].



- a. Backup Path : Select the path to save backup data on PC.
Disk Status : Display disk space and used space.
- b. Disk Overwrite : Check to overwrite HDD.
Disk Full Warning : If not check [Disk Overwrite] option, when HDD is full, there will be a warning.
Disk use : Select the HDD usage for disk full warning.
- c. DVR Date/Time Sync
: If click the DVR Date/Time Sync button, can change the time setting of DVR according to NTP Server / Time Zone / User Input.

NOTE : To apply the changes of the Client Setup, a separate password is required. This password is used commonly throughout the SMS software. The password is set to 1234 by default.

3.3.2 Event List

Event list display events that occurred from DVR that are connected in a list.

DVR Name	Event	Time
DT OPEN	Motion Event - Channel 13 - Camera C13	2012-06-26 19:14:18
DT OPEN	Motion Event - Channel 15 - Camera C15	2012-06-26 19:14:11
DT OPEN	Motion Event - Channel 15 - Camera C15	2012-06-26 19:14:00
DT OPEN	Motion Event - Channel 13 - Camera C13	2012-06-26 19:14:00
DT OPEN	Motion Event - Channel 11 - Camera C11	2012-06-26 19:14:00

① Save

Click the [Save] button to save the event information displayed in the current event list to the Log folder that is created as the Backup Path during the Client Setup.

② Read

Click the [Load] button to load the event list form the Log folder.

3.3.3 Status

The screenshot displays the DVR status interface. At the top, there is a grid of 16 channels (1-16) with icons for Motion, Alarm In, Alarm Out, Camera, and Video Loss. A red box highlights the 'System Status Information Area' in the center of the grid. Below the grid, there is a 'DVR Information Area' containing server details: Server Name: Demo2, Server IP: 192.168.2.96, Server Version: 2.4.11, Max Alarm: 4, and Max Audio: 16. At the bottom right, there is a 'Real-time Video Monitoring Area' showing four camera feeds (C01, C02, C03, C04) with motion detection icons and timestamps.

① System Status Information Area

Displays the motion, alarm input/output, camera connection status, and video loss information.

② DVR Information Area

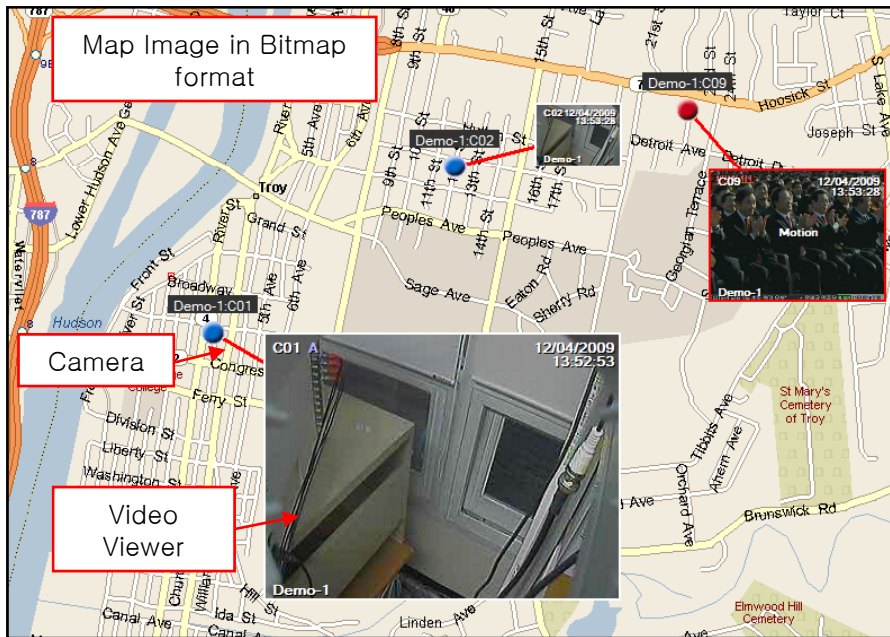
Displays the basic information of the connected DVR.

③ Real-time Video Monitoring Area

Displays all cameras of the connected DVR.

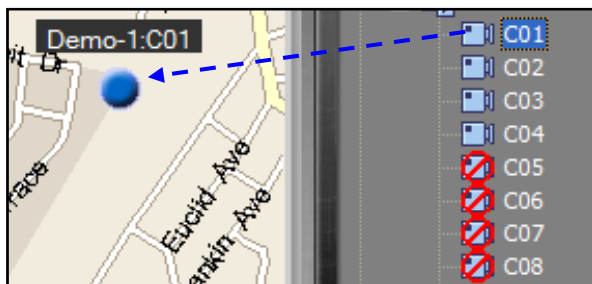
3.3.4 e-Map

By placing a camera at a virtual map and monitoring the video real-time, e-Map enables a user to remotely monitor more intuitively the location via video from the camera.



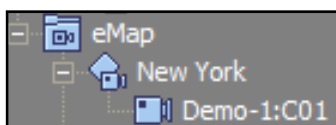
① Place Camera

: Drag-and-drop the camera of the connected DVR into a desired location on the map.



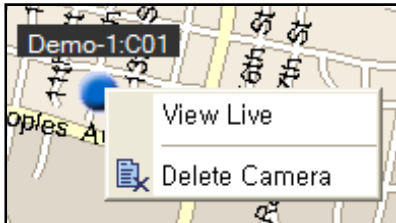
NOTE : The positioned camera color : Gray – No connection. Blue – Connected. Red – Event.
The camera cannot be relocated once positioned, but the video viewer is movable.

The positioned camera is automatically added to eMap as shown below:



② Delete Camera

: Click the right mouse on the positioned camera and select [Delete Camera].



Once the camera is deleted, it is deleted from the eMap of the remote site list as well.

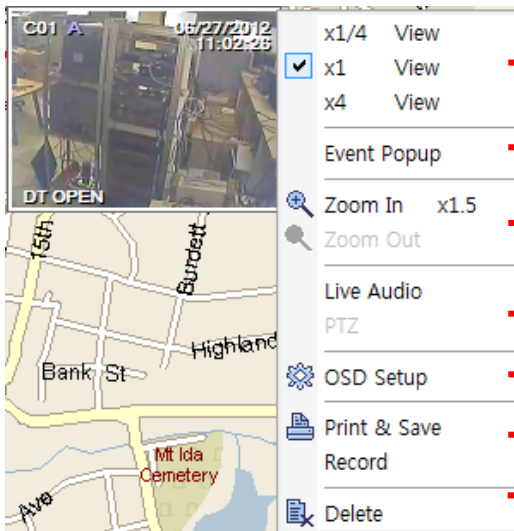
③ Video Viewer

Select [View Live] from the hot menu of the positioned camera or double-click on the camera to display a viewer window as shown below:



To close the viewer window, reselect [View Live] or double-click on the camera.

④ Hot Menu



→ Sets the size of the viewer.

→ The viewer is enlarged to X4 when an event occurs and an alarm sound is generated.

→ Enlarges or reduces the video digitally.

→ Paly Live audio.

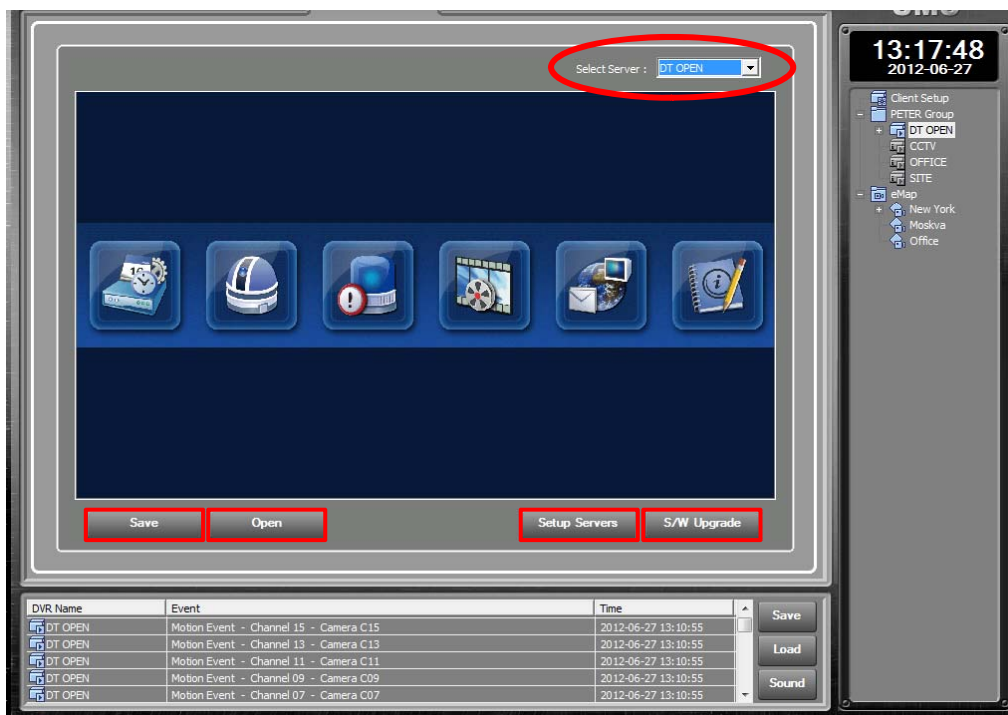
→ Set the displayed text information on video .

→ Print the image or capture and save it as an image file. Save video on PC (The save folder is [Live] folder)

→ Close the camera viewer.

3.3.5 Config

The config function can change DVR setup remotely.



NOTE : For the DVR setup from Config, refer to the DVR manual.

① Select Server

Select the currently connected DVR for change setup.



② Save

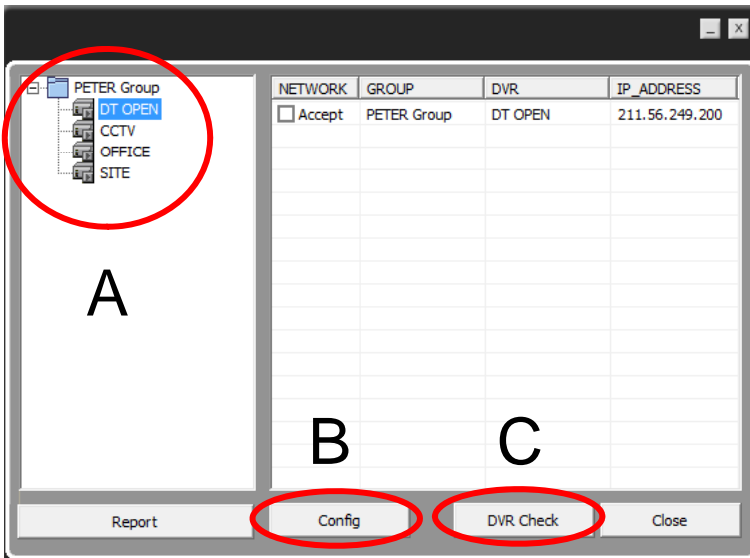
Click the Save button and select a save path in the PC where the currently set data is to be saved

③ Open

Click the Open button and select the saved setup file to read the saved setup data.

④ Setup Server

Click the [Setup Servers] button to apply the setup to DVR.



NOTE :

If NETWORK Accept is checked, the network setup is also applied. If the same network setup is applied to multiple DVRs, there may be problems caused by IP address conflict.

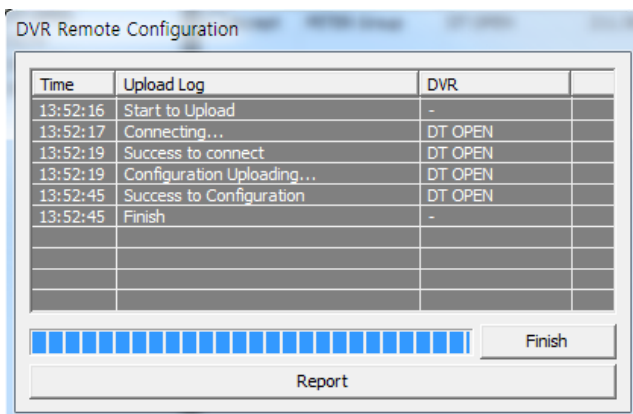
NOTE

: Before the setup application window appears, you will be prompted to enter a password. The password is the same as the one used for the Client Setup. (Default = 1234)

A. Select the DVR for changing setup by double click under group.

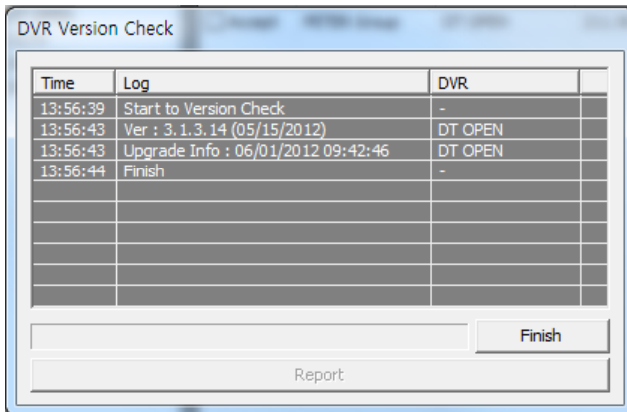
If multiple DVRs are added, the same setup is applied to all the added DVRs.

B. Click the [Config] button and click the [OK] button when appears [Remote Configuration] message.



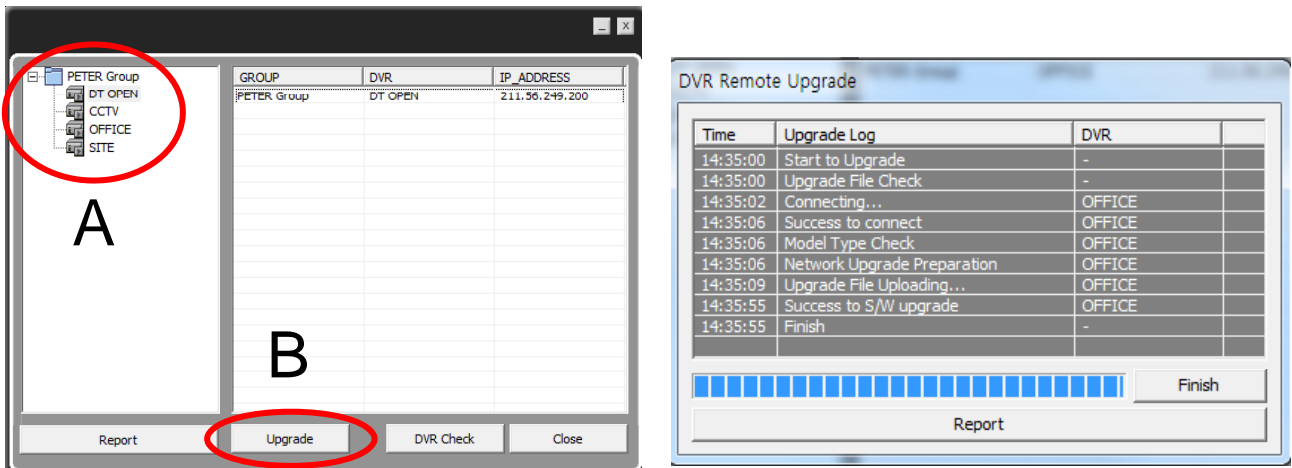
C. DVR Check

Check the connected DVR version.



⑤ S/W Upgrade

Click the [S/W Upgrade] button for DVR firmware upgrade.



A. Select the DVR for firmware upgrade by double click under group.

B. Click the [Upgrade] button and click the [OK] button when appears [Remote Upgrade] message.

NOTE

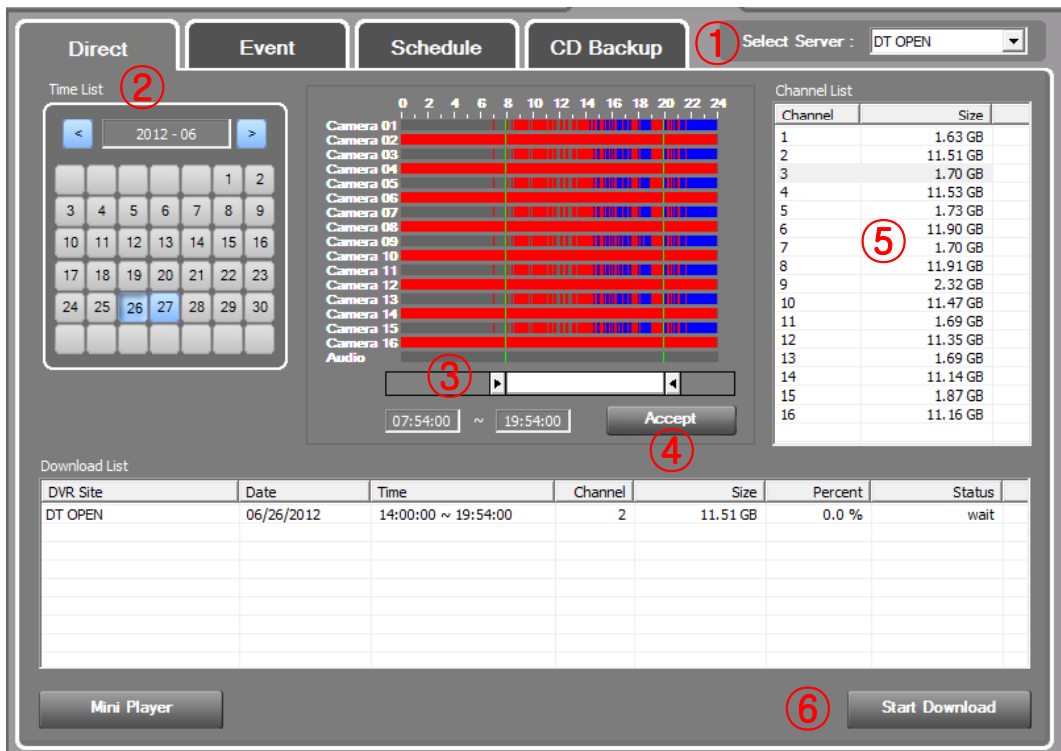
: Before the setup application window appears, you will be prompted to enter a password.
The password is the same as the one used for the Client Setup. (Default = 1234)

3.3.6 Backup

SMS Backup supports four modes: Direct, Event, Schedule, and CD Backup.

A. Direct Backup

: Direct Backup can backup directly based on date and time.



- ① Select Server : Select the connected DVR for backup.
- ② Select Date: Select the data. (The date with recorded video is activated in blue)
- ③ Select Time: Select the start and end times for backup by the icon.
- ④ File Information: Click the [Accept] button then the recording information is displayed on [Channel List].
- ⑤ Select Channel: Double-click the channel then the selected channel move to the [Download List].
- ⑥ Start Backup: Click the Start Download button to start the Direct Backup.

If the backup is completed, double-click on a corresponding item to play a video being coupled with a DVR player.

B. Event Backup

: Event Backup can backup with an event that occurred at a specified time.

DVR Site	Channel	Begin ~ End Time	Start Date/Time	Size	Status
DT OPEN	1	00:00:00 ~ 23:59:59			Stop
DT OPEN	2	00:00:00 ~ 23:59:59	2012-06-27 / 15:16:04	0.09 MB	Complete
DT OPEN	3	00:00:00 ~ 23:59:59			Stop
DT OPEN	4	00:00:00 ~ 23:59:59	2012-06-27 / 15:16:04	0.09 MB	Complete
DT OPEN	5	00:00:00 ~ 23:59:59			Stop
DT OPEN	6	00:00:00 ~ 23:59:59	2012-06-27 / 15:16:04	0.10 MB	Complete
DT OPEN	7	00:00:00 ~ 23:59:59			Stop
DT OPEN	8	00:00:00 ~ 23:59:59	2012-06-27 / 15:16:04	0.09 MB	Complete
DT OPEN	9	00:00:00 ~ 23:59:59			Stop
DT OPEN	10	00:00:00 ~ 23:59:59	2012-06-27 / 15:16:06	0.07 MB	Complete
DT OPEN	11	00:00:00 ~ 23:59:59			Stop
DT OPEN	12	00:00:00 ~ 23:59:59	2012-06-27 / 15:16:05	0.08 MB	Complete
DT OPEN	13	00:00:00 ~ 23:59:59			Stop
DT OPEN	14	00:00:00 ~ 23:59:59	2012-06-27 / 15:16:06	0.07 MB	Complete

NOTE : From the event setup operation of the DVR menu, the video transmission function should be activated.

- ① Select Server : Select the connected DVR for backup.
- ② Select Channel: Select a channel for backup.
- ③ Select Time: Select the start and end times for Event Backup.
- ④ Select Day: Select a day when the Event Backup is activated.
- ⑤ Add Event Backup : When click [Add Event Backup] button, the set items are added in the [Download List] and Event Backup is started automatically.

NOTE :

The time and day being set for Event Backup is based on the default settings of the user's PC.

C. Schedule Backup

: Schedule Backup can backup the specified recorded video at a specified time.

DVR Site	Date	Begin ~ End Time	Start Time	Ch...	Down / Total	Percent
DT OPEN	00/00/0000	00:00:00 ~ 15:00:00	17:30:20	1	Pending...	
DT OPEN	00/00/0000	00:00:00 ~ 15:00:00	17:30:20	2	Pending...	
DT OPEN	00/00/0000	00:00:00 ~ 15:00:00	17:30:20	3	Pending...	
DT OPEN	00/00/0000	00:00:00 ~ 15:00:00	17:30:20	4	Pending...	
DT OPEN	00/00/0000	00:00:00 ~ 15:00:00	17:30:20	5	Pending...	
DT OPEN	00/00/0000	00:00:00 ~ 15:00:00	17:30:20	6	Pending...	
DT OPEN	00/00/0000	00:00:00 ~ 15:00:00	17:30:20	7	Pending...	
DT OPEN	00/00/0000	00:00:00 ~ 15:00:00	17:30:20	8	Pending...	
DT OPEN	00/00/0000	00:00:00 ~ 15:00:00	17:30:20	9	Pending...	
DT OPEN	00/00/0000	00:00:00 ~ 15:00:00	17:30:20	10	Pending...	

- ① Select Server : Select the connected DVR for the Schedule Backup.
- ② Select Channel: Select a channel for Schedule backup.
- ③ Set Time : Select the start and end times for the backup of recorded video.
- ④ Set Download Start Time: Set a day and time during which the Schedule Backup is to be activated.
- ⑤ Add Schedule Backup : When click [Add Schedule Backup] button, Schedule Backup is automatically activated to backup the recorded video.

NOTE : [Set Time] should be done based on a DVR at a remote site, and “Set Time” should be based on the default settings of the user’s PC.

D. CD Backup

: The CD Backup function is used to remotely backup recorded video on a CD-ROM in DVR.

Direct Event Schedule CD Backup 1 Select Server : DT OPEN

Setup Server Side

All Channel 2

1 2 3 4 5 6 7 8

9 10 11 12 13 14 15 16

Start Date: 2012-06-27 3 Finish Date: 2012-06-27

Start Time: 16:38:04 Finish Time: 16:38:04

4 Get List

Download List

Channel	Start Date	Start Time	Finish Date	Finish Time	Size
<input checked="" type="checkbox"/> 1	06/27/2012	16:38:04	06/27/2012	16:38:04	1MB
<input checked="" type="checkbox"/> 2	06/27/2012	16:38:04	06/27/2012	16:38:04	7MB
<input checked="" type="checkbox"/> 3	06/27/2012	16:38:04	06/27/2012	16:38:04	1MB
<input checked="" type="checkbox"/> 4	06/27/2012	16:38:04	06/27/2012	16:38:04	6MB
<input checked="" type="checkbox"/> 5	06/27/2012	16:38:04	06/27/2012	16:38:04	2MB
<input checked="" type="checkbox"/> 6	06/27/2012	16:38:04	06/27/2012	16:38:04	6MB
<input checked="" type="checkbox"/> 7	06/27/2012	16:38:04	06/27/2012	16:38:04	1MB
<input checked="" type="checkbox"/> 8	06/27/2012	16:38:04	06/27/2012	16:38:04	7MB
<input checked="" type="checkbox"/> 9	06/27/2012	16:38:04	06/27/2012	16:38:04	1MB
<input checked="" type="checkbox"/> 10	06/27/2012	16:38:04	06/27/2012	16:38:04	6MB

Total Select File Size : 38MB

6 Start Burning

NOTE : CD Backup is only supported for DVR models with CD/DVD Writer.

- ① Select Server : Select the connected DVR for the CD Backup.
- ② Select Channel: Select a channel for CD Backup.
- ③ Set Time: Select the start and end times for the backup of recorded video.
- ④ Get List : Click the [Get List] button to import the file information of the recorded video set.
- ⑤ Select List: Check the channel and information of the recorded video and select an item to backup.
- ⑥ Start Burning : Click the [Start Burning] button to start the CD Backup of the recorded video.

The backed up video is backed up to the CD-ROM in the DVR.

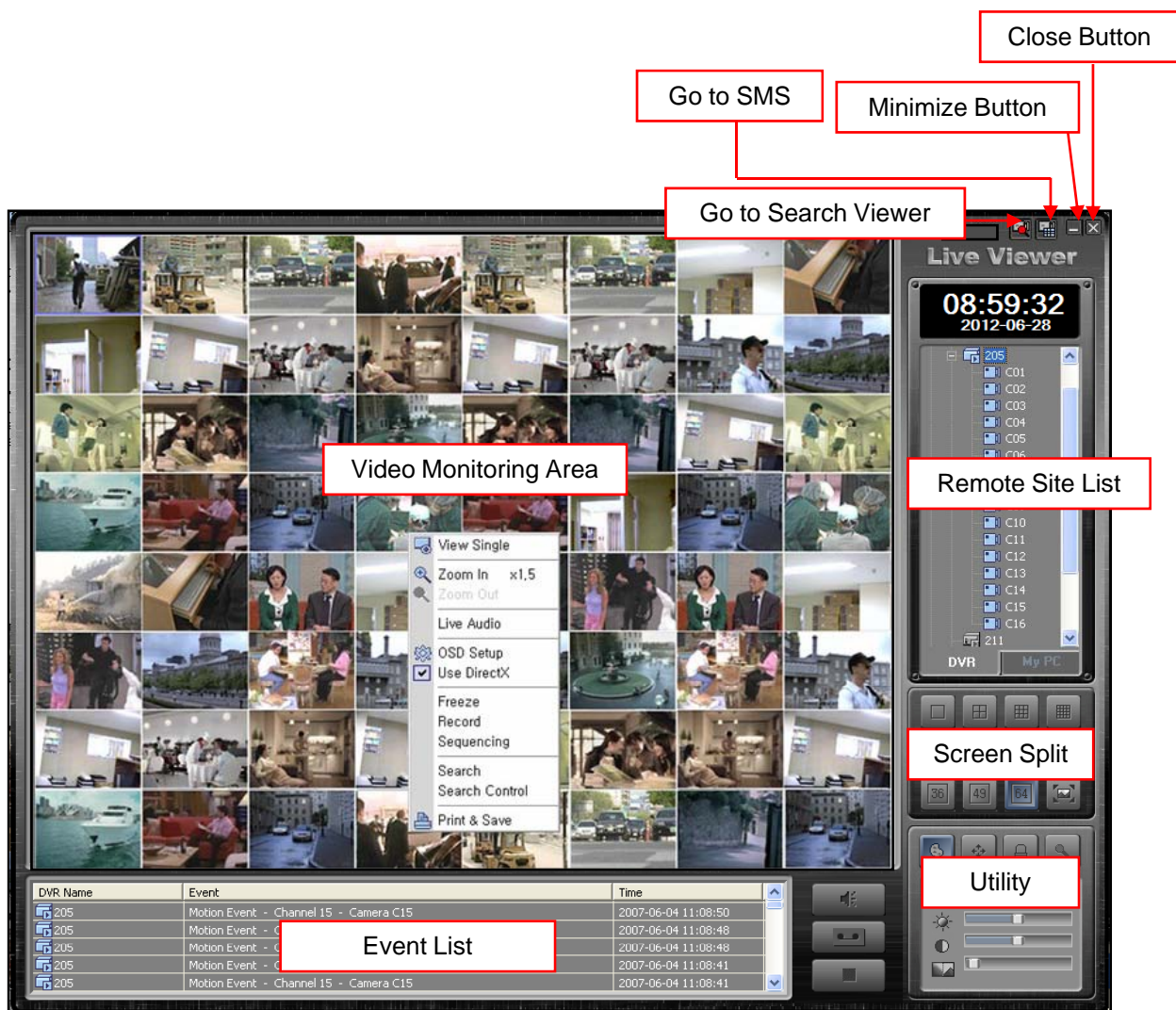
4. Live Viewer

4.1 General

Live Viewer is a stable remote monitoring software. It can connect multiple DVRs and play real-time and recorded videos, and monitor up to 64 channels of videos. It can also display event information when an event occurs at a remote site to help a user search related video.

4.2 Live Viewer Configuration

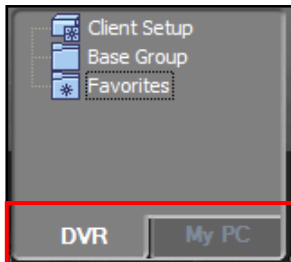
Live Viewer consists of the Video Monitoring Area, Remote Site List, Event List, and Utility.



4.3 Live Viewer Functions

4.3.1 Remote Site List

The Remote Site List of Live Viewer is divided into two tabs: the DVR tab for the management of DVR list and the My PC tab for the management of video list stored on a user's PC.

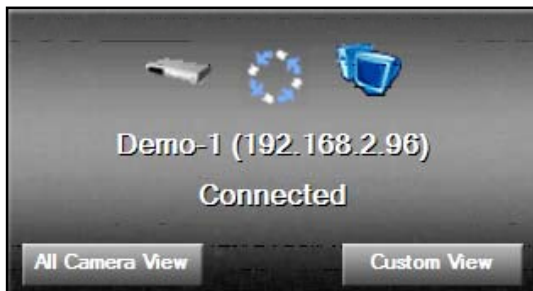


A. DVR

The management of DVR list and the Client Setup can be done in the same way as those of SMS. The Live Viewer has an additional function called "Favorites", which can manage up to 64 camera configurations being monitored from the Video Monitoring Area at the moment.

① Connect DVR

Click the right mouse on the DVR to be connected, and select [Connect] button from the hot menu that is displayed, or double-click on the DVR to get it connected



From the connection completion window, select [All Camera View] to see all camera videos of the connected DVR via the Video Monitoring Area; select [Custom View] to see the camera videos when needed.

② Disconnect DVR

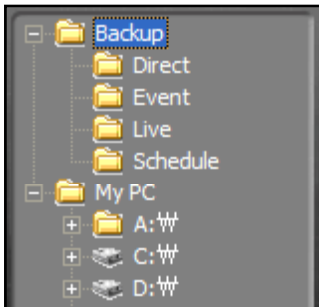
Click the right mouse on the connected DVR, and select [Disconnect] button from the hot menu to disconnect the DVR.

③ Favorites

This function is used to save up to 64 camera lists being monitored through the Video Monitoring Area. These lists can be added/modified/deleted using the hot menu commands of the Favorites.

B. My PC

Using the Backup or Real-time Recording function of SMS, the video lists saved on a user's PC can be searched easily, and the Windows Explorer-like structure helps find saved videos.



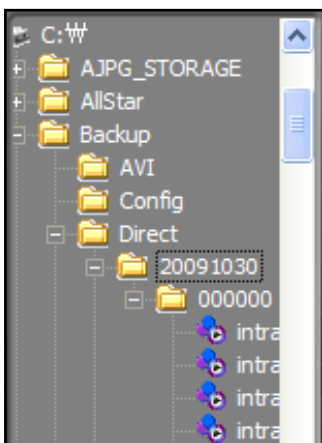
① Backup

The Backup items are the lists contained in the Backup Path set through Client Setup.

- Direct : Video saved through Direct Backup of SMS
- Event : Video saved through Event Backup of SMS
- Live : Video saved through real-time recording
- Schedule : Video saved through Schedule Backup of SMS

② My PC

My PC can find saved videos through the list of storage devices of a user's PC.



4.3.2 Video Monitoring Area

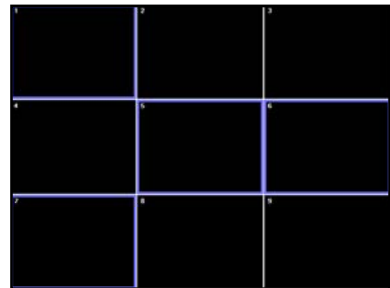
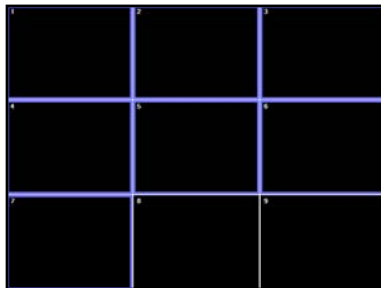
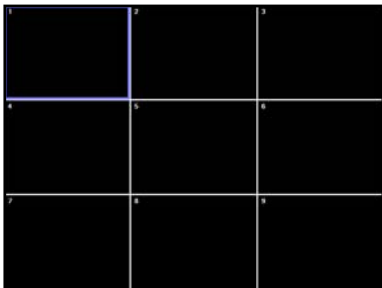
Video Monitoring Area can monitor real-time videos of up to 64 cameras, and provide various functions via the hot menu and utility.



A. Select Video Area

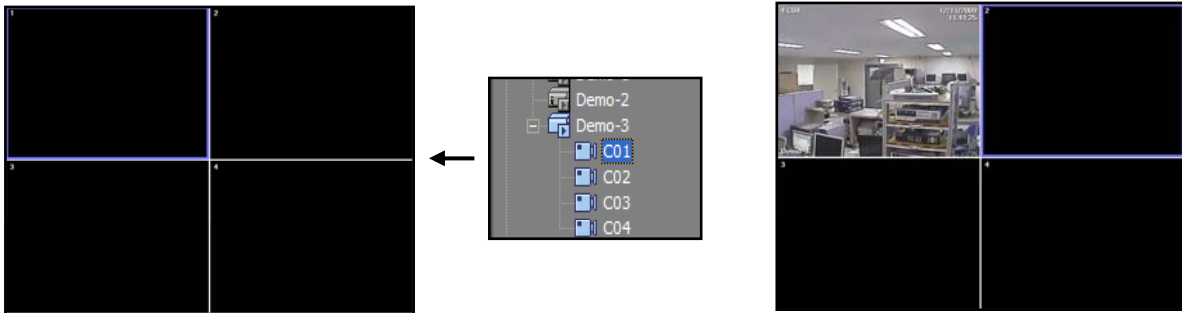
The operation of each video area can be independent. To do this, video area can be selected in three different ways. The selected video area is turned into blue.

- ① General Selection: Click the left mouse button on the selected video area.
- ② Simultaneous Selection: To select No. 1 to 7 video areas at the same time, select the No. 1 video area via General Selection and then click the left mouse button on the No. 7 video area while pressing the Shift key.
- ③ Multiple Selection: Click the left mouse button on the video area selected arbitrarily while pressing the Ctrl key. Multiple selection of arbitrary video areas is possible.

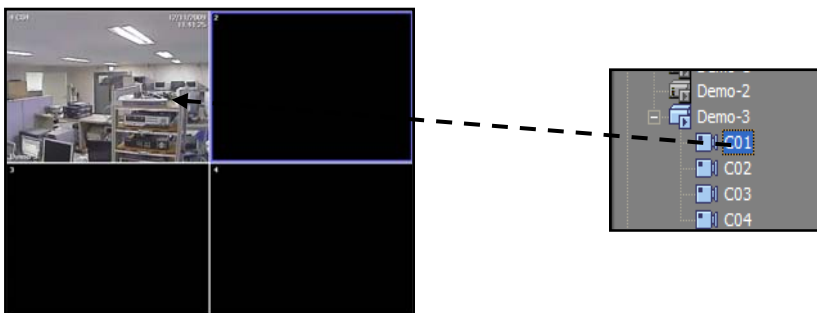


B. Play Camera Video

Select a video area to play and double-click on a camera item on the remote site list.

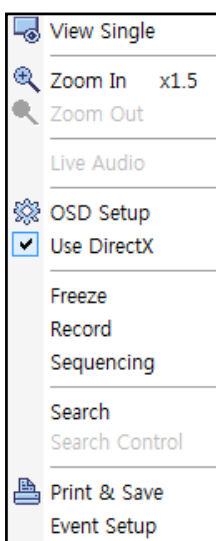


Or, drag-and-drop a camera into a video area to play the corresponding camera video.



C. Hot Menu

If one or multiple channels are selected, hot menu functions are applied to all selected video areas.



- View Single: Changes selected video area to one screen mode.
- Zoom In, Zoom Out: Enlarges or reduces video digitally.
- Live Audio: If an audio input is connected, plays the audio.
- Live Quality: Sets the play quality of video. (SLT model not supported)
- OSD Setup: Sets text information displayed on video.
- Use DirectX: Sets the use of DirectX for the playing of the video.
- Freeze: Temporarily pauses the playing of the video.
- Record : Saves video real-time to PC. The storage folder is the "Live" folder created as the Backup Path.
- Search: Remotely plays recorded video of the channel currently playing the video.
- Print & Save: Captures a video image to print or save it as an image file.

4.3.3 Utility

Utility provides a variety of convenient functions, which facilitate more diverse monitoring of the video.

A. Screen Split

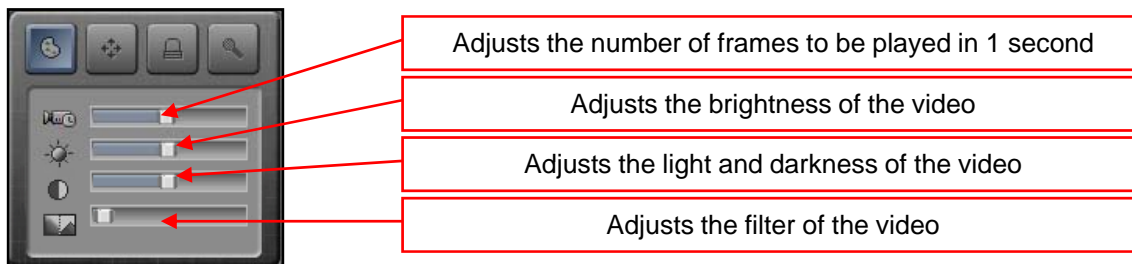
Live Viewer supports 11 screen split modes as well as overall screen mode.



When the current screen split mode is 4 screen mode and if 4 screen split mode is reselected, a new 4 screen mode with the next 4 videos is displayed. When the video area is double-clicked, the area is converted to 1 screen mode, and when the area is double-clicked again, it is converted to the mode prior to the conversion to 1 screen mode.

B. Video Adjustment Control

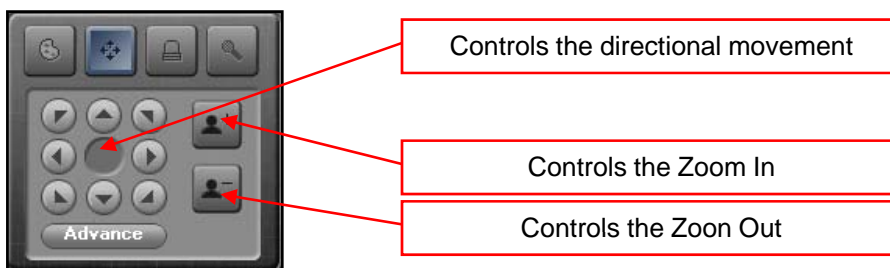
Using the slide type control, the video of the selected video area can be adjusted.



NOTE : SLT model does not support the number of frames played per second and the video filter.

C. P/T/Z Control

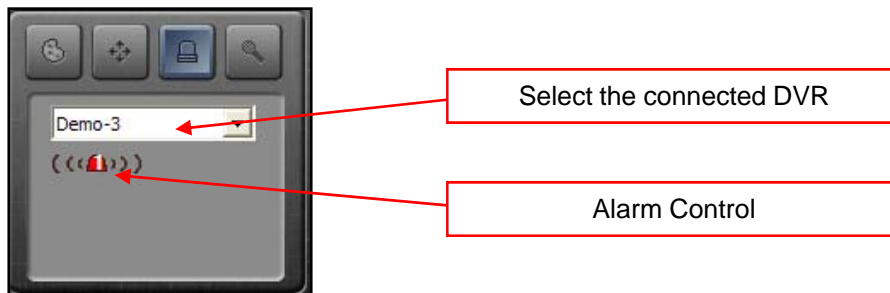
If a camera of which a video is played is P/T/Z camera, P/T/Z control is enabled.



Click the [Advance] button for the Preset, Pattern and other expanded P/T/Z controls.

C. Alarm Control

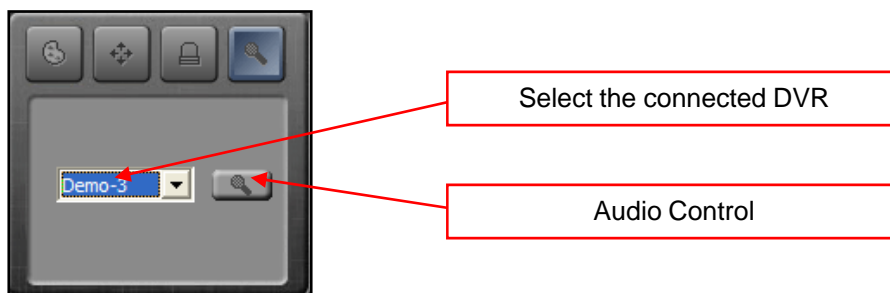
This function enables the control of alarm output devices such as emergency light and siren that are connected to the DVR.



Based on the number of alarm output devices supported according to DVR model, the control appears.

D. Audio Control

Using the microphone connected to a user's PC, the remote transfer of audio to a corresponding DVR is possible.



NOTE : The transferred audio can only be played with DVR and cannot be saved into it.

4.3.4 Search

Live Viewer provides the Search function that can play videos real-time and videos recorded to DVR and saved on a user's PC

A. Local Search

To play a video saved on a user's PC, double-click it from the [My PC] tab of the Remote Site List. The video is played at the selected video area. It can also be played using drag-and-drop action.

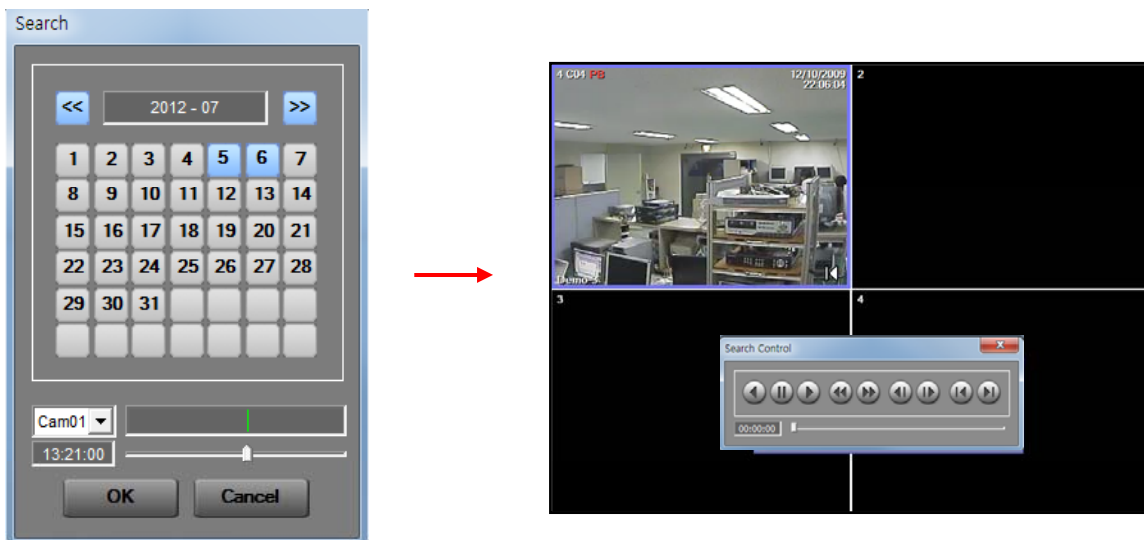


B. Remote Search

The Remote Search function is used to remotely play recorded video to DVR.

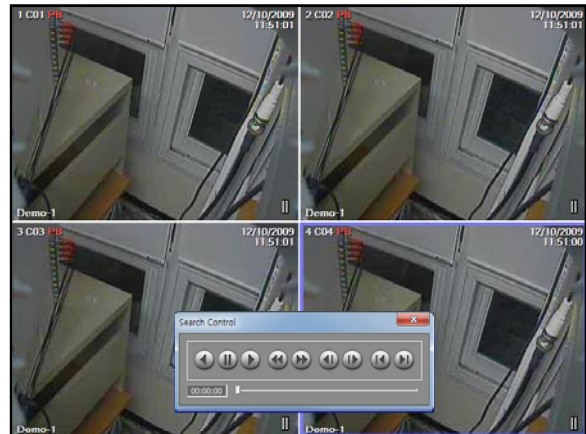
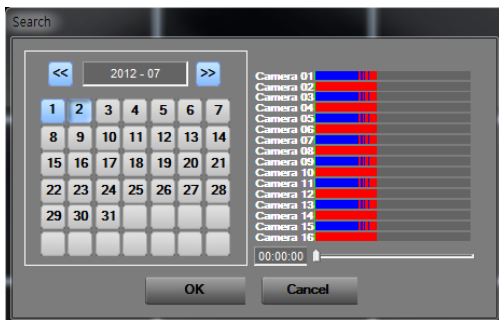
① Single Search

Single Search enables the playing of the video through the hot menu of video area being played.



② Multi Search

Multi Search enables the playing of the video through the hot menu of DVR item in the Remote Site List.



C. Search Video Control

This controls the playing of the searched video. It can control searched videos in the selected video area in the same direction and can also control the videos in each video area independently.



5. Search Viewer

5.1 General

Search Viewer is a software dedicated for the playing of recorded videos. It searches videos recorded to DVR or the ones saved to a user's PC. It plays up to 16 videos and provides various play controls for each video.

5.2 Search Viewer Configuration

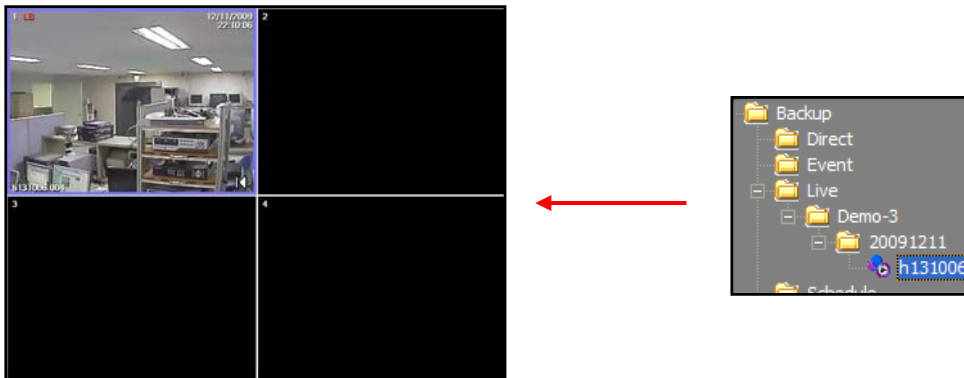
Search Viewer consists of the Remote Site List, Search Video Area, Time Search Area, and Utility.



5.3 Search Viewer Functions

5.3.1 Local Search

The Local Search function is used to search and play video files saved on a user's PC. The procedure for searching and playing video files saved on a user's PC is the same as that of the Live Viewer.

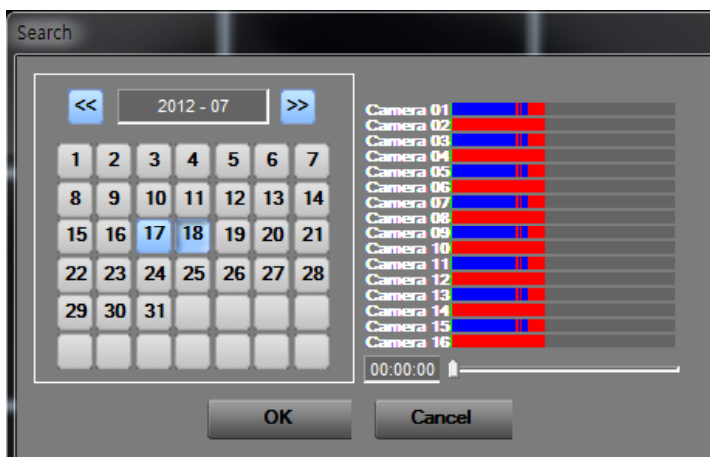


5.3.2 Remote Search

The Remote Search function is used to remotely play video recorded or saved to DVR, and is available through the connection via Remote Site List.

A. Video Search

When the connection to DVR is completed via Remote Site List, the video search window appears.

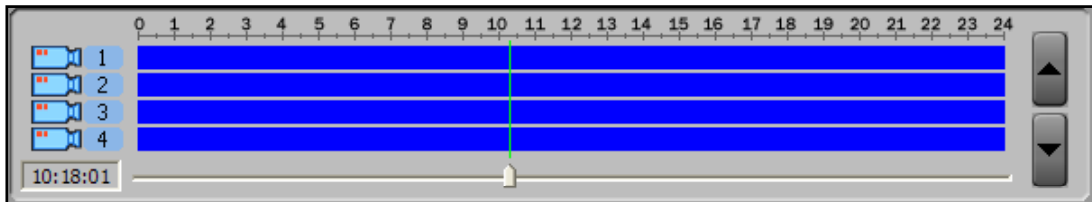


When the date recorded to the connected DVR and the play start time are selected, the searched video is played at the search video area.

NOTE : In Search Viewer, only one DVR can be connected; multiple connection of DVRs is not supported.

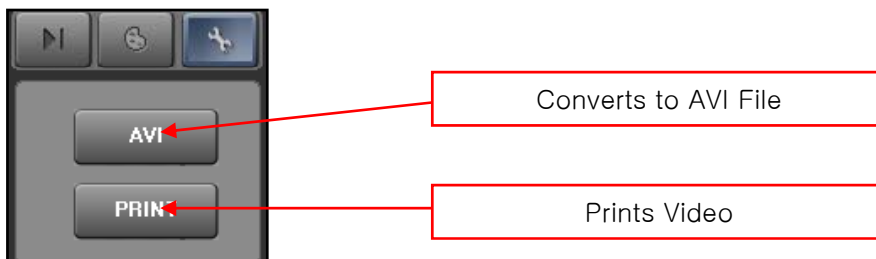
B. Time Search

It is possible to move a video part searched through Video Search to another video part at specific time through Time Search. When a video part is moved to a section where no recording is performed, the movement to a video part close to that section is made.

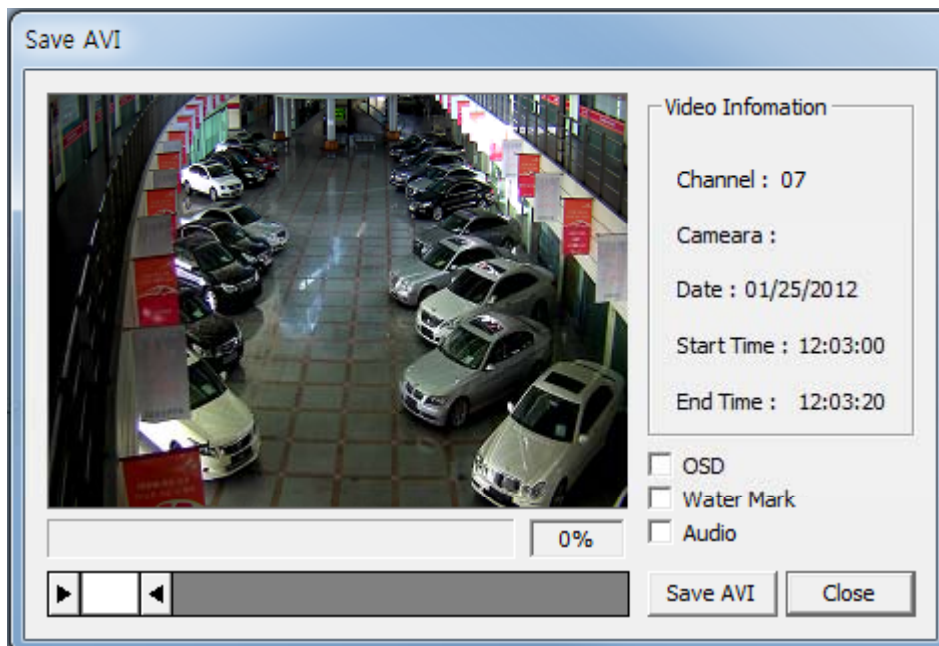


5.3.3 AVI File Conversion

AVI file conversion is used to convert a video saved on a user's PC to an AVI file, which can be played by commercially available video playing programs.



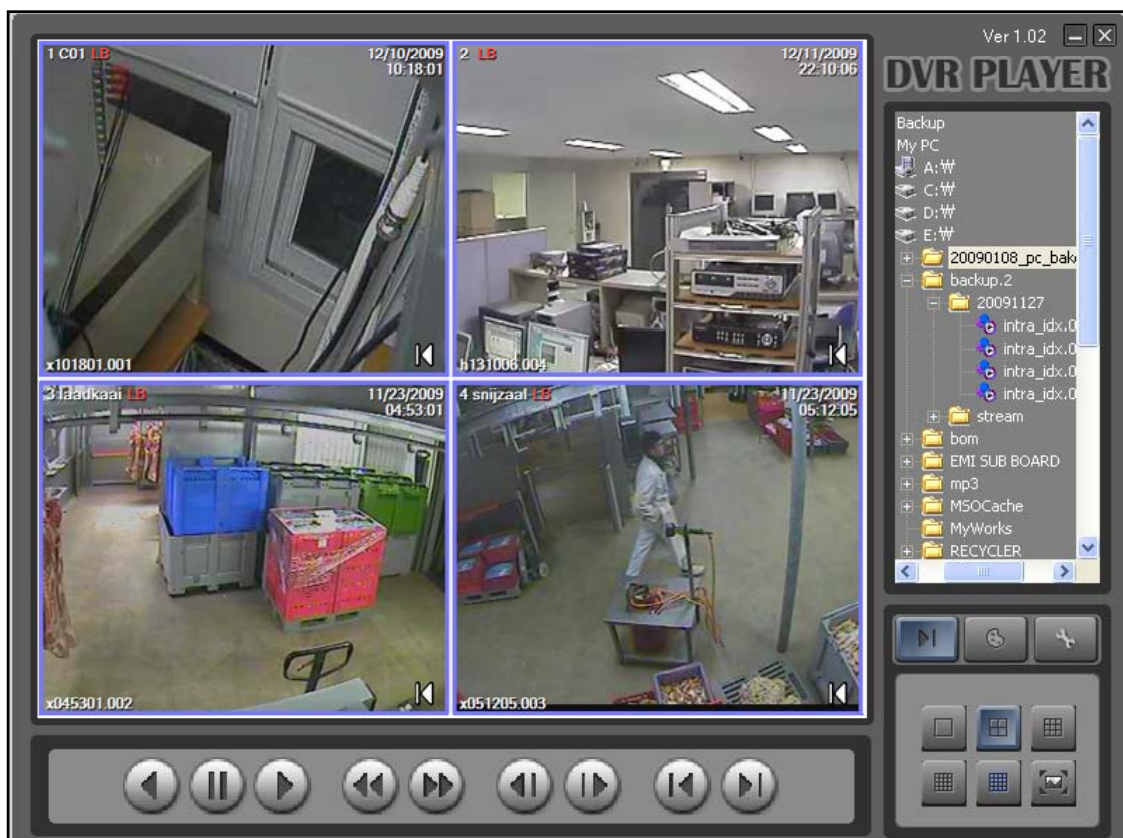
Select a search video area and select "AVI" from the Utility; the AVI file conversion window then appears.



6. DVR Player

6.1 General

DVR Player is a software that is used for playing video files saved on a user's PC. While backing up using USB or DVD/CD from DVR, video files are saved together. Thus, video files saved on a user's PC can be played without installing the SMS software separately.

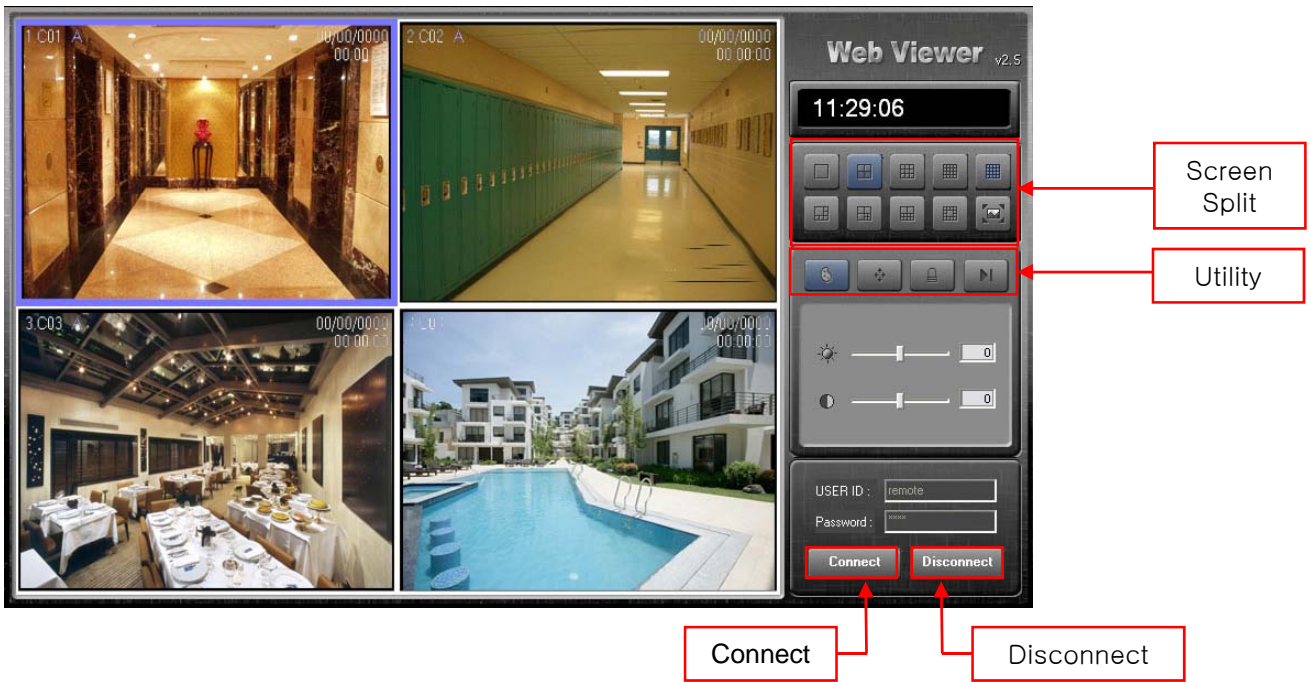


6.2 DVR Player Functions

DVR Player functions are the same as those of the Local Search of the Search Viewer.

7. Web Viewer

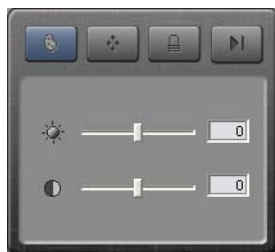
7.1 Web viewer Configuration



7.2 Web viewer Functions

Web viewer functions are the same as those of the Live Viewer.

① Adjustment Control



② P/T/Z Control



③ Alarm out Control



④ Search Control

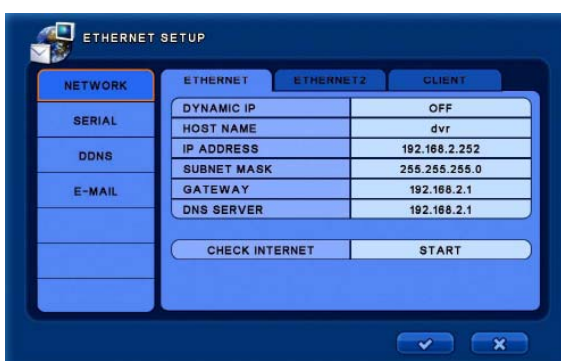


7.1 Network Connect

For using web connection through internet, 7000 and 80 ports, port forwarding needs to be configured in the router.

① DVR Web client setup

To connect to the DVR via Web viewer, the [Ethernet] setup on DVR is required first.



② Under the Network settings on the DVR, enter the IP address of the DVR and Gateway information for your network. NOTE: These settings are preconfigured from the factory but may need to be changed to suit your network.

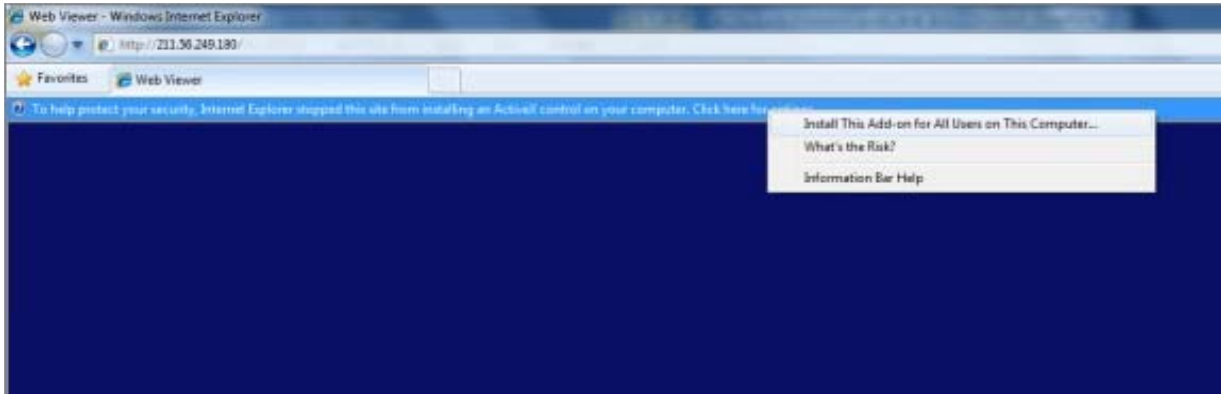
③ Open Internet Explorer and enter the IP address of the DVR in the address bar. E.g. <http://192.168.0.2:XXXX> where XXXX is the port number as defined under the Client tab in the DVR.

If the DDNS hostname of the DVR is known, you could connect to the DVR by entering the host name in the address bar. E.g. <http://YYYY.ddnsdvr.com:XXXX> where YYY is the host name of the DVR as configured under the DDNS tab on the DVR and XXXX is the port number as defined under the Client tab in the DVR.

④ ActiveX installation for Internet Explorer

In case of Windows not allowing the ActiveX control to install, try the following:

1. Open Internet Options within Internet Explorer
2. Click on the Security tab
3. Click on Trusted Sites
4. Click on the Sites button and add either the IP address or the Domain name of the DVR and click Close
5. Slide the Security Level slider down to Low and click on OK
6. Retry the connection to the DVR and follow prompts for ActiveX installation



⑤ When ActiveX has been successfully installed, you will see a login page. Enter the Client user ID & Password for the DVR and click the Connect button.

